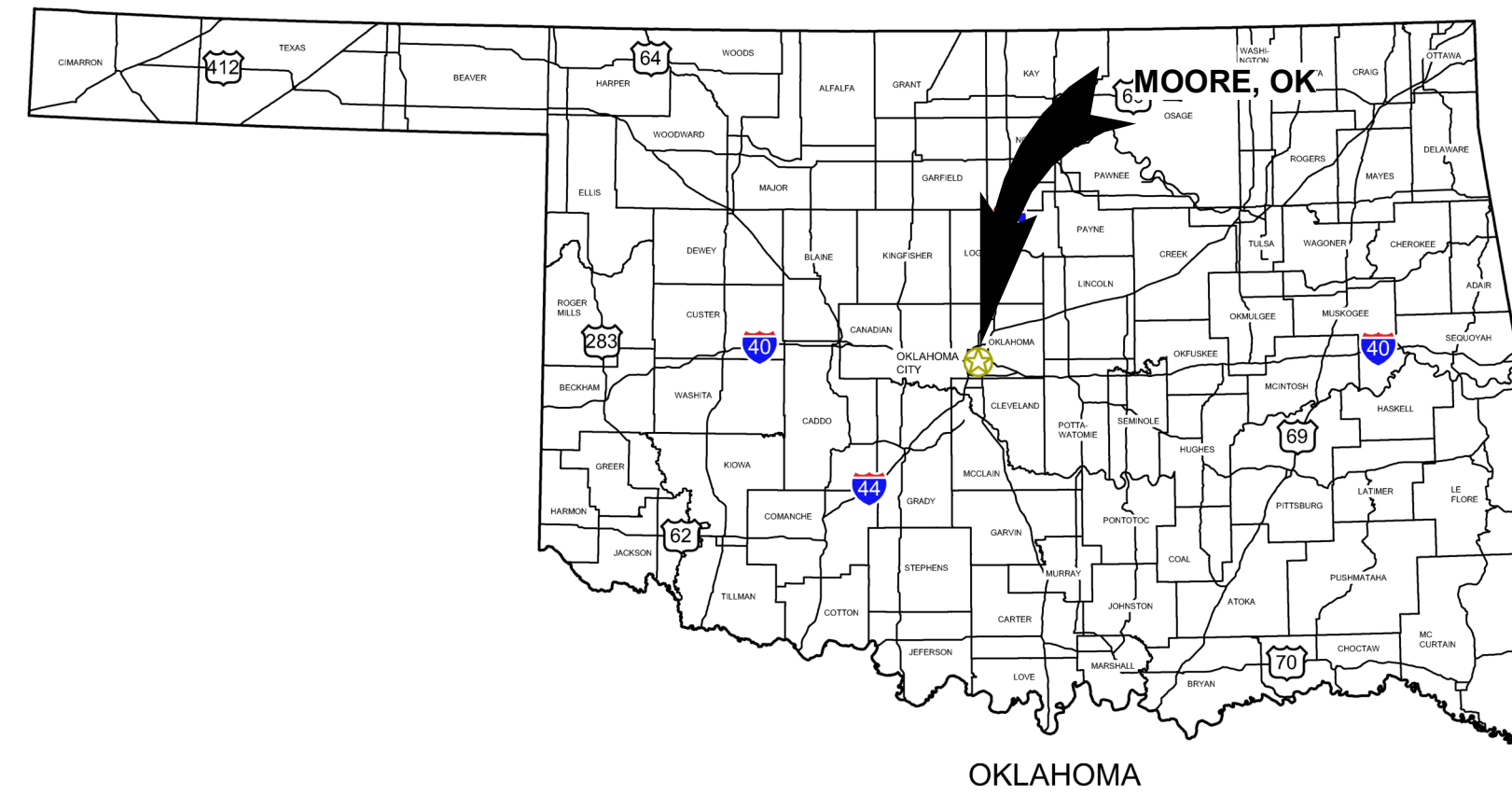


MOORE WWTP DIGESTER BUILDING REMOVAL

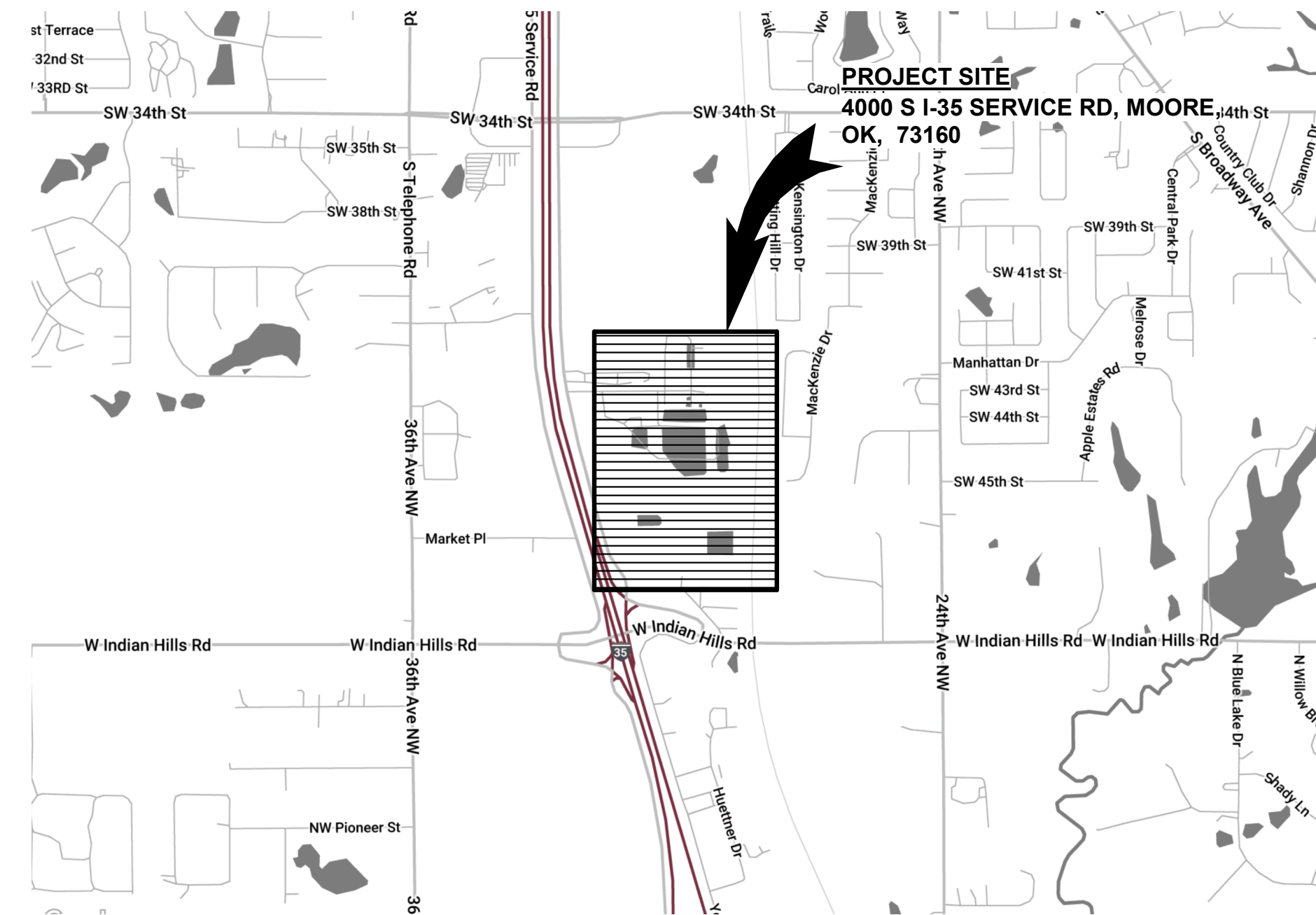


CITY OF MOORE

BID SET



AREA MAP
NO SCALE



VICINITY MAP
NO SCALE

CITY OF MOORE BID NO.: 2026-004
OWRB LOAN NO.: ORF-26-0048-CW
GARVER PROJECT NO. 2500545

DECEMBER 13, 2025



750 SW 24th St. Ste 200
Moore, OK 73160
(405) 329-2555



© 2025 GARVER, LLC
THIS DOCUMENT, ALONG WITH THE
IDEAS AND DESIGNS CONVEYED
HEREIN, SHALL BE CONSIDERED
INSTRUMENTS OF PROFESSIONAL
SERVICE AND ARE PROPERTY OF
GARVER, LLC. ANY USE,
REPRODUCTION, OR DISTRIBUTION
OF THIS DOCUMENT, ALONG WITH
THE IDEAS AND DESIGN CONTAINED
HEREIN, IS PROHIBITED UNLESS
AUTHORIZED IN WRITING BY
GARVER, LLC OR EXPLICITLY
ALLOWED IN THE GOVERNING
PROFESSIONAL SERVICES
AGREEMENT FOR THIS WORK.

OK COA # 4193
EXPIRES 06/30/2026



Digitally Signed 12/03/2025

REV	DATE	DESCRIPTION	BY



CITY OF MOORE
MOORE, OK
MOORE WWTP DIGESTER
BUILDING REMOVAL

COVER SHEET

JOB NO.: 2500545
DATE: DEC. 2025
DESIGNED BY: BCR
DRAWN BY: JAS
CHECKED BY: MTN

BAR IS ONE INCH ON ORIGINAL DRAWING

IF NOT ONE INCH ON THIS SHEET, ADJUST SCALES ACCORDINGLY.

DRAWING NUMBER

01-G001

SHEET NUMBER **01**

01 - GENERAL

SHEET NO.	DWG. NO.	DESCRIPTION
01	01-G001	COVER SHEET
02	01-G002	INDEX OF DRAWINGS
03	01-G003	GENERAL CONVENTIONS AND ABBREVIATIONS

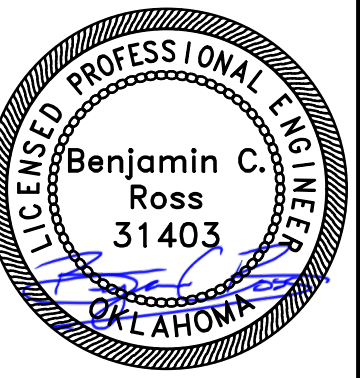
50 - DIGESTER BUILDING

SHEET NO.	DWG. NO.	DESCRIPTION
04	50-X101	DIGESTERS - DEMOLITION PLAN 1
05	50-X102	DIGESTERS - DEMOLITION PLAN 2



© 2025 GARVER, LLC
 THIS DOCUMENT, ALONG WITH THE IDEAS AND DESIGNS CONVEYED HEREIN, SHALL BE CONSIDERED INSTRUMENTS OF PROFESSIONAL SERVICE AND ARE PROPERTY OF GARVER, LLC. ANY USE, REPRODUCTION, OR DISTRIBUTION OF THIS DOCUMENT, ALONG WITH THE IDEAS AND DESIGN CONTAINED HEREIN, IS PROHIBITED UNLESS AUTHORIZED IN WRITING BY GARVER, LLC OR EXPLICITLY ALLOWED IN THE GOVERNING PROFESSIONAL SERVICES AGREEMENT FOR THIS WORK.

OK COA # 4193
 EXPIRES 06/30/2026



Digitally Signed 12/03/2025

REV	DATE	DESCRIPTION	BY



CITY OF MOORE
 MOORE, OK
 MOORE WWTP DIGESTER BUILDING REMOVAL

INDEX OF DRAWINGS

JOB NO.: 2500545
 DATE: DEC. 2025
 DESIGNED BY: BCR
 DRAWN BY: JAS
 CHECKED BY: MTN

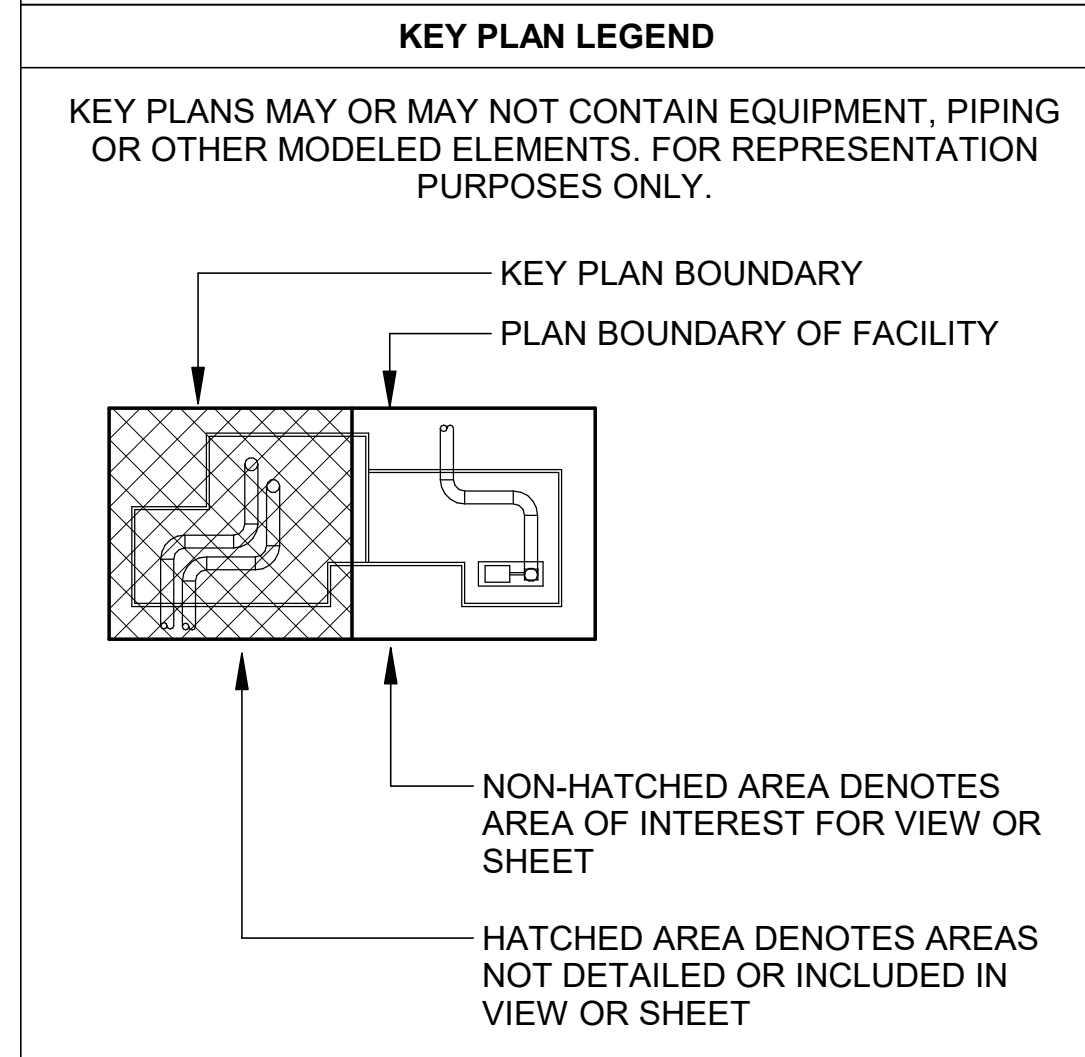
BAR IS ONE INCH ON ORIGINAL DRAWING

IF NOT ONE INCH ON THIS SHEET, ADJUST SCALES ACCORDINGLY.

DRAWING NUMBER
01-G002
 SHEET NUMBER
02

DRAWING NUMBER EXAMPLE	DISCIPLINE DESIGNATORS	SHEET TYPE DESIGNATOR			
FACILITY AREA CODE → 35 SHEET SEQUENCE NUMBER → P DISCIPLINE DESIGNATOR → 101	G - GENERAL C - CIVIL I - INSTRUMENTATION & CONTROL X - DEMOLITION F - FIRE PROTECTION L - LIFE SAFETY A - ARCHITECTURAL S - STRUCTURAL P - PROCESS MECHANICAL M - BUILDING MECHANICAL & PLUMBING E - ELECTRICAL T - TELECOMMUNICATIONS	CIVIL DISCIPLINE 100 - SITE PLANS 200 - GRADING & PAVING 300 - PIPING & PROFILES	OTHER DISCIPLINES 100 - PLANS 200 - ELEVATIONS 300 - SECTIONS	ALL DISCIPLINES 400 - ENLARGED VIEWS 500 - DETAILS 600 - DIAGRAM OR SCHED	700 - USER DEFINED 800 - USER DEFINED 900 - ISOMETRICS

CONTINUATION SYMBOLS	
	ROUND/CYLINDRICAL ELEMENTS
	FLAT/RECTANGULAR/ VIEW ELEMENTS
	NEW CONSTRUCTION
	BEYOND
	DEMOLISHED
	FUTURE
	EXISTING



VIEW REFERENCE & TITLE SYMBOLS	
	SHEET NUMBERS ARE DENOTED BY FACILITY NUMBER-SHEET NUMBER EXAMPLE: 30-P101 FACILITY #30 SHEET #P101 SHEET NUMBER # OF TOTAL INDEX COUNT.
	CALLOUT DENOTES A STANDARD DETAIL REFERENCE. EXAMPLE: D03/0000-000 SPECIFICATION DIVISION: 03 SPECIFICATION SECTION: 0000 DETAIL REFERENCE: 000
	CALLOUT DENOTES A VIEW REFERENCE ABOUT A MATCHLINE
	TITLE DENOTES A PLAN VIEW LAYOUT. (PLAN VIEW IS #1 ON SHEET 30-P101)
	TITLE DENOTES AN ELEVATION, SECTION, OR SPECIFIC DETAIL VIEW LAYOUT. (SECTION VIEW #1 IS BACK REFERENCING SHEET 30-P101.)
	TITLE DENOTES A DETAIL VIEW LAYOUT THAT IS NOT TO SCALE. (DETAIL VIEW #1)
	TITLE DENOTES A ISOMETRIC VIEW LAYOUT THAT IS NOT TO SCALE. (DETAIL VIEW #1)
	CALLOUT DENOTES AN ELEVATION REFERENCE. (ELEVATION VIEW #1 ON 30-P201)
	CALLOUT DENOTES A CUT SECTION REFERENCE. (SECTION VIEW #1 ON 30-P301)
	CALLOUT DENOTES AN ENLARGED AREA REFERENCE. (ENLARGED VIEW #1 ON 30-P401)

GENERAL DRAWING SYMBOLS	
	REVISION CLOUD AND NUMBER SHOWN ON PLANS
	POINT OF CONNECTION - NEW TO EXISTING
	DEMO TO POINT
	KEYED NOTE REFERENCE
	SYMBOL INDICATES A ROOM / AREA DESIGNATION, WITH ROOM NUMBER AND SQUARE FOOTAGE
	SYMBOL INDICATES A STRUCTURAL GRIDLINE OR DATUM
	SYMBOL INDICATES A LEVEL DATUM IN A SECTION OR ELEVATION
	LINE INDICATES A PROJECT MATCHLINE
	CENTERLINE

PHASE GRAPHICS	
	EXISTING ELEMENTS
	NEW ELEMENTS
	EXISTING ELEMENTS TO BE REMOVED/DEMOLISHED
	FUTURE CONSTRUCTION NEW ELEMENT

ABBREVIATIONS	
ABV	ABOVE
AFF	ABOVE FINISH FLOOR
ANSI	AMERICAN NATIONAL STANDARDS INSTITUTE
ASTM	AMERICAN SOCIETY FOR TESTING AND MATERIALS
AUX	AUXILIARY
AWWA	AMERICAN WATER WORKS ASSOCIATION
BKR	BREAKER
BOP	BOTTOM OF PIPE
BOS	BOTTOM OF STRUCTURE
CJ	CONSTRUCTION JOINT
CKT	CIRCUIT
CL	CENTERLINE
CMU	CONCRETE MASONRY UNIT
COGEN	COMBINED HEAT AND POWER GENERATION
COL	COLUMN
CONT	CONTINUOUS
DIA	DIAMETER
EA	EXHAUST AIR, EXPANSION ANCHOR, EACH
EL., ELEV	ELEVATION
ELEC	ELECTRICAL
ENCL	ENCLOSURE
FA	FIRE ALARM
FFE	FINISHED FLOOR ELEVATION
FL	FLOW LINE
FLR	FLOOR
FRP	FIBERGLASS REINFORCED PLASTIC
FT	FEET, FOOT
GA	GAUGE, GAGE
GALV	GALVANIZED
GFI, GFCI	GROUND FAULT CIRCUIT INTERRUPTER
GRND	GROUND
H, HT	HEIGHT
HOA	HAND-OFF-AUTOMATIC
HORIZ	HORIZONTAL
HP	HORSEPOWER, HEAT PUMP
HYD	HYDRANT
ID	INSIDE DIAMETER
IE	INVERT ELEVATION
KVA	KILOVOLT-AMPERES
KW	KILOWATTS
LBS, #	POUNDS
LF	LINEAR FEET
MAX	MAXIMUM
MIN	MINIMUM
N/A	NOT AVAILABLE
NFPA	NATIONAL FIRE PROTECTION ASSOCIATION
NIC	NOT IN CONTRACT
NTS	NOT TO SCALE
OC	ON CENTER
OFCI	OWNER FURNISHED
OH	OVERHEAD
OSHA	OCCUPATIONAL SAFETY & HEALTH ADMINISTRATION
PD	PROCESS DRAIN
PIV	POST INDICATOR VALVE
PNL	PANEL
PRV	PRESSURE RELIEF VALVE
PSF	POUNDS PER SQUARE FOOT
PSI	POUNDS PER SQUARE INCH
PSIA	POUNDS PER SQUARE INCH ABSOLUTE
PSIG	POUNDS PER SQUARE INCH GAUGE
PVC	POLYVINYL CHLORIDE
RE:	REFERENCE, REFER
REINF	REINFORCEMENT
REQD	REQUIRED
RM	ROOM
SEC	SECTION
SF	SQUARE FEET
SHT	SHEET
SPEC	SPECIFICATIONS
SQ	SQUARE
SST	STAINLESS STEEL
STA	STATION
STD	STANDARD
SURF	SURFACE
SUSP	SUSPEND, SUSPENDED
T&B	TOP AND BOTTOM
THRU	THROUGH
T/	TOP OF
(TYP)	TYPICAL
U/F	UNDER FLOOR
U/G	UNDER GROUND
U/S	UNDER SLAB
UL	UNDERWRITERS LABORATORIES, INC. UNLESS NOTED OTHERWISE
UNO	VOLT, VALVE
V	VOLT, VALVE
VA	VOLT-AMPERE
VERT	VERTICAL
W	WATT, WIRE, WIDTH, WINDOW, WATER
W/	WITH
W/O	WITHOUT
WS	WATERSTOP
WT	WATERTIGHT, WEIGHT
XMFR	TRANSFORMER

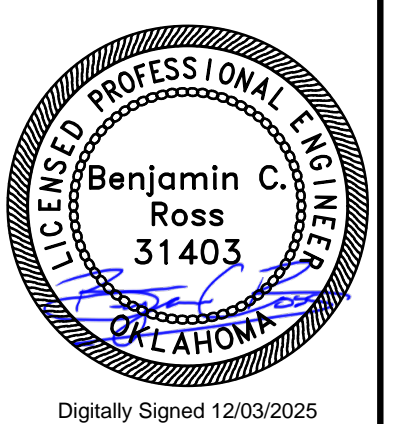
GENERAL SHEET NOTE

ALL GENERAL NOTES ON THIS SHEET ARE TO BE APPLIED TO ALL DRAWINGS IN THIS SET UNLESS OTHERWISE NOTED PER DISCIPLINE. SYMBOLS AND ABBREVIATIONS SHOWN ON THIS SHEET MAY OR MAY NOT BE USED IN THE CONTAINED REFERENCE DRAWINGS.



© 2025 GARVER, LLC
 THIS DOCUMENT, ALONG WITH THE IDEAS AND DESIGNS CONVEYED HEREIN, SHALL BE CONSIDERED INSTRUMENTS OF PROFESSIONAL SERVICE AND ARE PROPERTY OF GARVER, LLC. ANY USE, REPRODUCTION, OR DISTRIBUTION OF THIS DOCUMENT, ALONG WITH THE IDEAS AND DESIGN CONTAINED HEREIN, IS PROHIBITED UNLESS AUTHORIZED IN WRITING BY GARVER, LLC OR EXPLICITLY ALLOWED IN THE GOVERNING PROFESSIONAL SERVICES AGREEMENT FOR THIS WORK.

OK COA # 4193
 EXPIRES 06/30/2026



Digitally Signed 12/03/2025

BY	DESCRIPTION	REV	DATE



CITY OF MOORE
 MOORE, OK
 MOORE WWTP DIGESTER BUILDING REMOVAL

GENERAL CONVENTIONS AND ABBREVIATIONS

JOB NO.: 2500545
 DATE: DEC. 2025
 DESIGNED BY: BCR
 DRAWN BY: JAS
 CHECKED BY: MTN

BAR IS ONE INCH ON ORIGINAL DRAWING
 IF NOT ONE INCH ON THIS SHEET, ADJUST SCALES ACCORDINGLY.

DRAWING NUMBER
01-G003

SHEET NUMBER
03

Revit File: Autodesk Docs://W02-2500545 - Moore WWTP Digester Bldg Imps/2500545 - 50 Digesters Building_Demo Phase.rvt
 Plot Date: 12/22/2025 10:40:02 AM

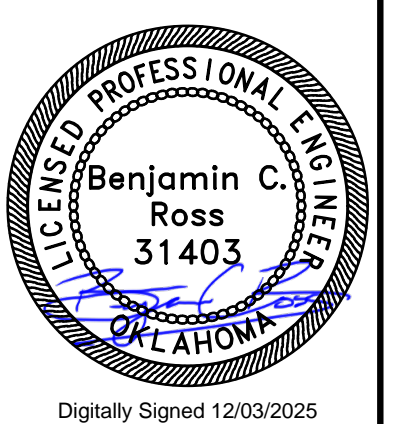
KEYNOTES	
1	DEMOLISH ODOR CONTROL DUCT WITHIN BUILDING FOOTPRINT.
2	DEMOLISH EXISTING DIGESTER METAL BUILDING.
3	CUT ODOR CONTROL DUCT AND INSTALL TEMPORARY END CAP TO OPEN END TO PROTECT FROM RAIN WATER INTRUSION. FUTURE ODOR CONTROL DUCT WILL CONNECT TO THIS LOCATION.



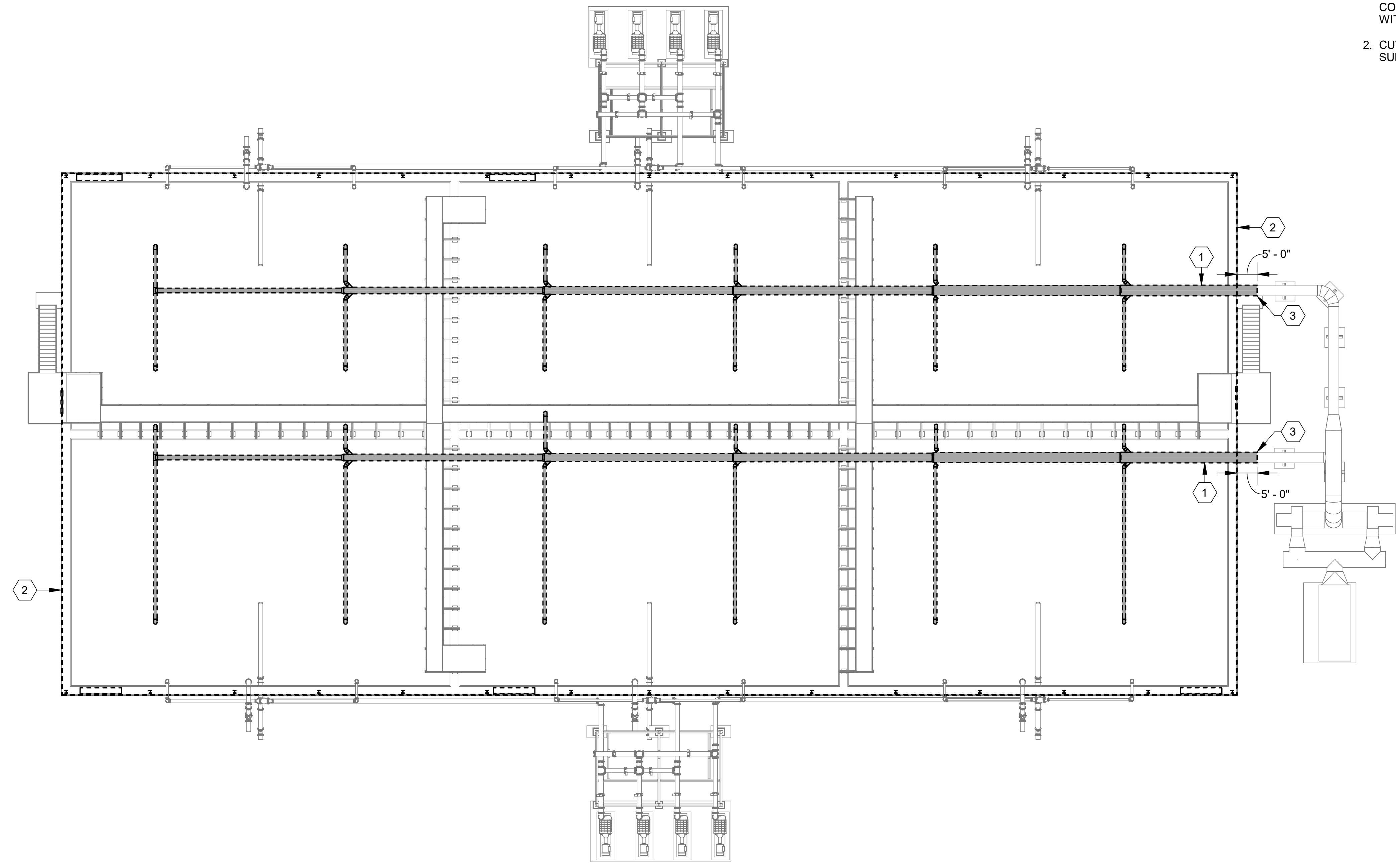
© 2025 GARVER, LLC
 THIS DOCUMENT, ALONG WITH THE IDEAS AND DESIGNS CONVEYED HEREIN, SHALL BE CONSIDERED INSTRUMENTS OF PROFESSIONAL SERVICE AND ARE PROPERTY OF GARVER, LLC. ANY USE, REPRODUCTION, OR DISTRIBUTION OF THIS DOCUMENT, ALONG WITH THE IDEAS AND DESIGN CONTAINED HEREIN, IS PROHIBITED UNLESS AUTHORIZED IN WRITING BY GARVER, LLC OR EXPLICITLY ALLOWED IN THE GOVERNING PROFESSIONAL SERVICES AGREEMENT FOR THIS WORK.

- NOTES:**
- ALL LIGHTING, SWITCHES, AND OUTLETS THAT ARE SUPPORTED BY THE METAL BUILDING SHALL BE DEMOLISHED. DEMOLISH INACTIVE CIRCUITS BACK TO POINTS OF ORIGIN. SWITCH BREAKERS TO "OFF" POSITION AND LABEL AS "SPARE". CAP OFF EXISTING CONDUITS 2' ABOVE GRADE AND PERMANENTLY LABEL CONDUITS WITH THE NAME OF THE ASSOCIATED PANEL.
 - CUT EXISTING METAL BUILDING ANCHOR BOLTS FLUSH WITH SURFACE OF CONCRETE.

OK COA # 4193
 EXPIRES 06/30/2026



Digitally Signed 12/03/2025



REV	DATE	DESCRIPTION	BY



CITY OF MOORE
 MOORE, OK
 MOORE WWTP DIGESTER BUILDING REMOVAL

DIGESTERS - DEMOLITION PLAN 1

JOB NO.: 2500545
 DATE: DEC. 2025
 DESIGNED BY: BCR
 DRAWN BY: JAS
 CHECKED BY: MTN

BAR IS ONE INCH ON ORIGINAL DRAWING
 IF NOT ONE INCH ON THIS SHEET, ADJUST SCALES ACCORDINGLY.

DRAWING NUMBER
50-X101
 SHEET NUMBER
04

PROJECT NORTH
 1
 50-X101 SCALE: 1/16" = 1'-0"
DEMOLITION PLAN

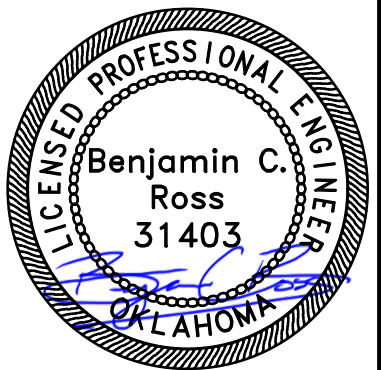
KEYNOTES

1 DEMOLISH EXISTING DIGESTER METAL BUILDING.



© 2025 GARVER, LLC
 THIS DOCUMENT, ALONG WITH THE IDEAS AND DESIGNS CONVEYED HEREIN, SHALL BE CONSIDERED INSTRUMENTS OF PROFESSIONAL SERVICE AND ARE PROPERTY OF GARVER, LLC. ANY USE, REPRODUCTION, OR DISTRIBUTION OF THIS DOCUMENT, ALONG WITH THE IDEAS AND DESIGN CONTAINED HEREIN, IS PROHIBITED UNLESS AUTHORIZED IN WRITING BY GARVER, LLC OR EXPLICITLY ALLOWED IN THE GOVERNING PROFESSIONAL SERVICES AGREEMENT FOR THIS WORK.

OK COA # 4193
 EXPIRES 06/30/2026



Digitally Signed 12/03/2025

REV	DATE	DESCRIPTION	BY



CITY OF MOORE
 MOORE, OK
 MOORE WWTP DIGESTER BUILDING REMOVAL

DIGESTERS -
 DEMOLITION PLAN 2

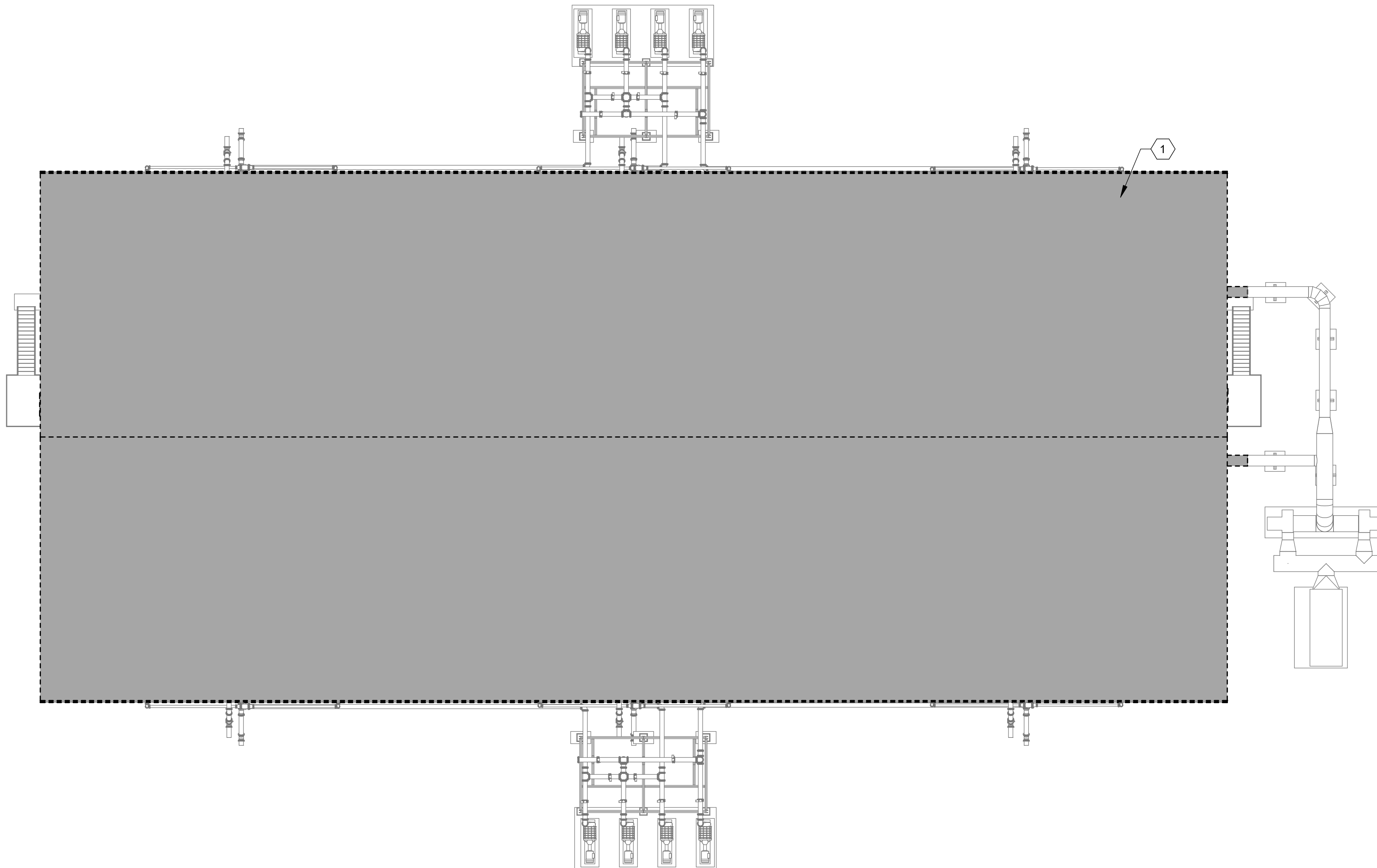
JOB NO.: 2500545
 DATE: DEC. 2025
 DESIGNED BY: BCR
 DRAWN BY: JAS
 CHECKED BY: MTN

BAR IS ONE INCH ON ORIGINAL DRAWING
 0" 1"
 IF NOT ONE INCH ON THIS SHEET, ADJUST SCALES ACCORDINGLY.

DRAWING NUMBER

50-X102

SHEET NUMBER **05**



PROJECT NORTH
 1
 50-X102 SCALE: 1/16" = 1'-0"
DEMOLITION PLAN