

THE STORMWATER SCOOP

FALL SEASON

WHAT IS STORMWATER?

Stormwater occurs after a rainfall. Stormwater flows over impervious (unable to penetrate) surfaces like drive ways, sidewalks, streets, parking lots, and roofs.

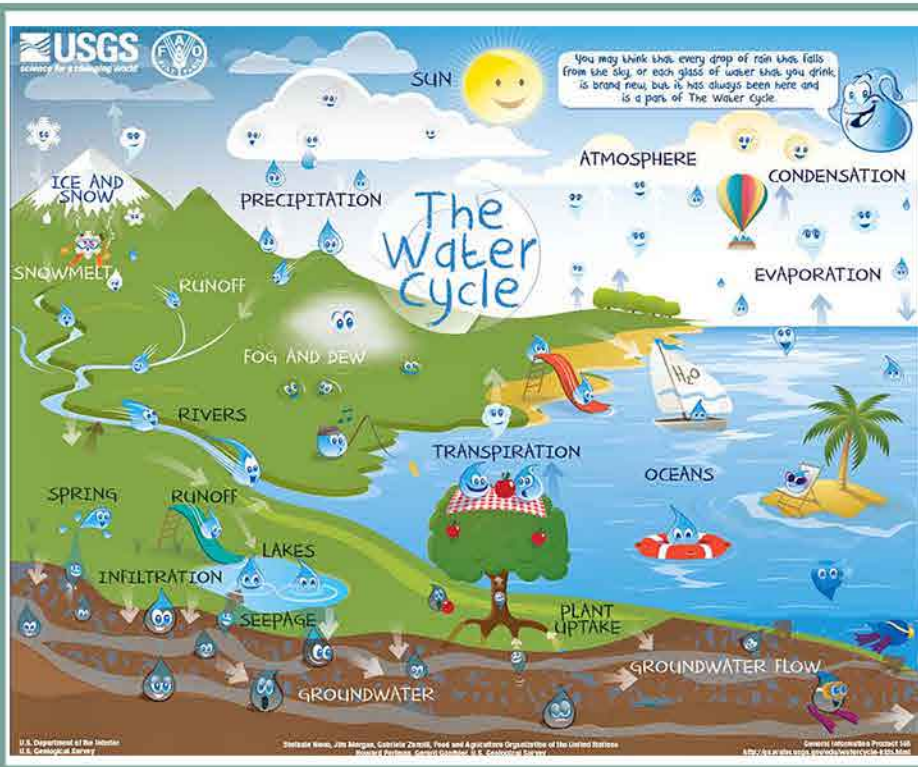
Stormwater can collect pollution including trash, oil, and chemicals, which flow into creeks and lakes where we swim, fish, and get drinking water!



HOW TO BE A GOOD STORMWATER STEWARD?

- ✓ Never dump anything down storm drains.
- ✓ Sweep driveways, sidewalks, and roads instead of using a water hose.
- ✓ Avoid using yard chemicals.
- ✓ Educate friends, family, and neighbors.
- ✓ Wash car over grass instead of the driveway.
- ✓ Use fertilizers sparingly.
- ✓ Properly dispose of hazardous household chemicals.
- ✓ Contact your local recycle center for any questions!

405-793-4373



POLLUTED STORMWATER CAUSES PROBLEMS!

Stormwater can carry fertilizer from yards, motor oil from vehicles, plastic bottles, insecticides, paint, and hazardous waste that can cause serious illness or death to wildlife and also humans. All of these pollutants can make it into our drinking water through the Water Cycle.



TO REPORT A STORMWATER VIOLATION, PLEASE CALL 405-793-5052

